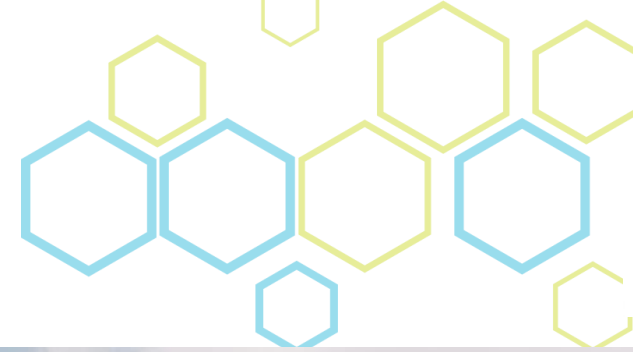




**Asia-Pacific  
Housing Forum  
Manila**



Organized by



# PRECAST PANEL SYSTEM

## SHAPING THE FUTURE OF SOCIALIZED HOUSING

July 29-31, 2019 | Manila, Philippines

# ABOUT DATEM

- One of the leading construction firms in the country
- Accredited as a Quadruple A contractor by the Philippine Contractors Accreditation Board (PCAB)
- Over 35 years in the industry
- Offers Total Value-Engineered Construction in terms of **quality, time, and cost**
- A pioneer in precast technology

# THE TRUE MARK OF INDUSTRY EXPERTISE

## Quadruple A Accreditation

- Financial capacity
- Building experience
- Technical expertise



QUADRUPLE  
A

# THE TRUE MARK OF INDUSTRY EXPERTISE

## Triple ISO Certification

- Quality Management Systems (ISO 9008: 2015)
- Environmental Management Systems (ISO: 14001:2015)
- Occupational Health and Safety Systems (ISO 18001:2007)





# MEMBERSHIPS

Through its affiliations with various local and international professional organizations, DATEM helps promote fellowship and cooperation among industry players, contributing to the creation of a more robust construction industry in the country, the region, and across the globe.



**AMCHAM Philippines**



**ASEAN Constructors  
Federation**



**Association of  
Carriers and  
Equipment Lessors**



**Construction Safety  
Foundation, Inc.**



SAFETY ORGANIZATION OF  
THE PHILIPPINES, INC.

**Safety Organization  
of the Philippines,  
Inc.**



**Employers  
Confederation of the  
Philippines**



**International  
Federation of Asian  
and Western Pacific  
Contractors'  
Associations**



**Management  
Association  
Philippines**



**Philippine Chamber  
of Commerce and  
Industry**



**Philippine Green  
Building Council**



**Philippine Constructors  
Association**



**Asia-Pacific  
Housing Forum  
Manila**

Organized by



# OUR VISION AND MISSION

## VISION

The preferred partner in Total Value-Engineered Construction through innovation and technology

# OUR VISION AND MISSION

## MISSION

- By committing to timely delivery with the highest standards of quality in our projects and services;
- By providing responsible and exceptional customer experience;
- By committing to be the foremost green builder in the country through environmental practices and sustainable development;
- By continually improving our system, processes, and governance;
- And by dedicating our efforts towards the health, safety, and well-being of our people and stakeholders, by advancing safety standards.



# CORE VALUES

## INTEGRITY

We seek to act with integrity and to accept accountability for our actions. We steadfastly adhere to high principles and professional standards. We conduct ourselves with uncompromising integrity and honesty as individuals, as teams, and as a company.

## EXCELLENCE

We have the passion to do our best in each moment, relentlessly pursuing continuous improvement and excellence in projects, products, processes, and services.

## INNOVATION

We encourage generating ideas at every level in the organization. We foster creativity in the workplace as we are committed to challenging ourselves to deliver increasing value to our customers.

## MALASAKIT

We have unwavering dedication to our work. We show compassion and respect through social responsibility toward our peers, colleagues, and country. We are passionate with our work.



# CORE IDENTITY

Above and beyond *what* we do, we seek to be known for *how* we deliver every project entrusted to us. The DATEM core identity defines who we are as a people and the kind of culture we live by.

## Dedication

The unrelenting resolve to deliver on our commitments and fulfill our vision

## Accountability

The prudent disposition to accept and assume responsibility for every action and decision

## Teamwork

The willingness to collaborate, co-create, and cooperate to achieve a common goal

## Excellence

The commitment to offer Total Value-Engineered Construction in terms of quality, time, and cost

## Malasakit

The deep sense of stewardship of the company, the nation, and the environment

# PRODUCTS AND SERVICES

With innovation at its core, DATEM offers a wide spectrum of products built with the highest standards, and services that highlight the company's expertise in complete structural and architectural works.

## Products

- Beams
- Formworks
- Transfloor

## Services

- Technical Consultancy
- Project Planning
- Value Engineering
- Research and Development
- Quality Assurance
- Safety Program
- Cost-Benefit Analysis
- Time-Saving Strategy







**Asia-Pacific  
Housing Forum  
Manila**

Organized by  
**Habitat  
for Humanity®**  
Philippines

# INNOVATIONS IN CONSTRUCTION TECHNOLOGIES



**TRADITIONAL**



**MODERN**

# INNOVATIONS IN CONSTRUCTION TECHNOLOGIES



**TRADITIONAL**



**MODERN**



# INNOVATIONS IN CONSTRUCTION TECHNOLOGIES



**TRADITIONAL**



**MODERN**

# INNOVATIONS IN CONSTRUCTION TECHNOLOGIES



**TRADITIONAL**



**MODERN**



**Asia-Pacific  
Housing Forum  
Manila**

Organized by



# **COMMON PROBLEMS ENCOUNTERED IN SOCIALIZED HOUSING**



## MESSY CONSTRUCTION







**Asia-Pacific  
Housing Forum  
Manila**

Organized by



# LONGER CONSTRUCTION TIME





Asia-Pacific  
Housing Forum  
Manila

Organized by



## INFERIOR FINISH



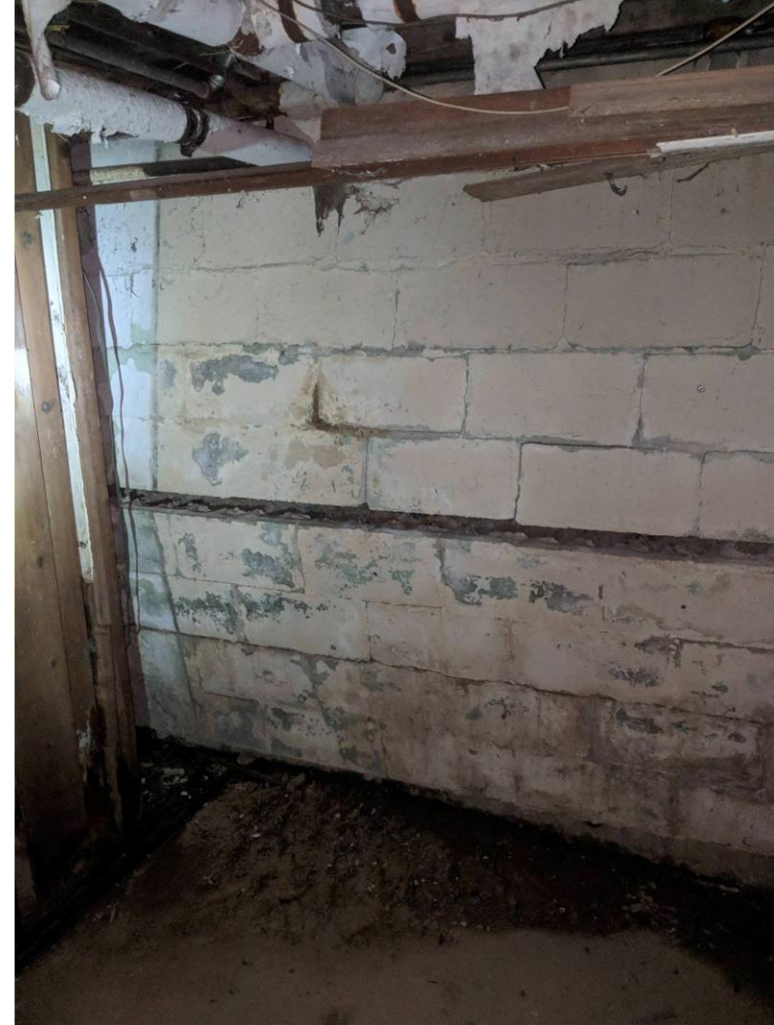


# MEPF PROBLEMS





## DURABILITY ISSUES







Asia-Pacific  
Housing Forum  
Manila

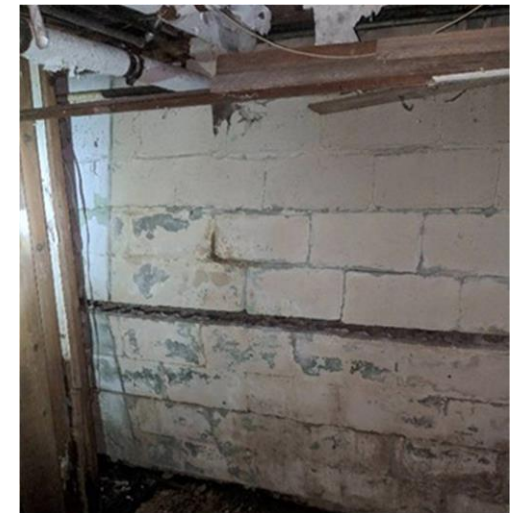
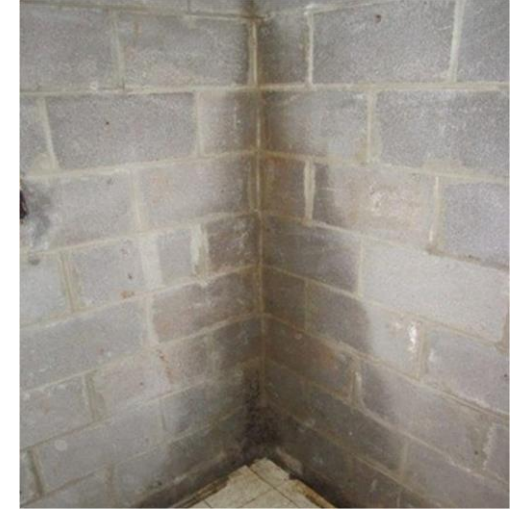
Organized by



# WATER LEAKAGES



# IS THERE A WAY TO SOLVE THESE PROBLEMS?







Asia-Pacific  
Housing Forum  
Manila

Organized by



# PRECAST TECHNOLOGY







**Asia-Pacific  
Housing Forum  
Manila**

Organized by



# **ADVANTAGES OF PRECAST PANEL SYSTEM**



# ADVANTAGES : INSTALLATION

Precast can be easily installed with the use of lifting equipment and tools. This prevents unnecessary mess such as mortar fills and CHB debris.



# ADVANTAGES : **FASTER SCHEDULE**

In terms of the overall schedule, using precast system is 16.67% faster compared to using traditional concrete.







# ADVANTAGES : FINISHING

Precast is ready to receive primer paint.





Asia-Pacific  
Housing Forum  
Manila

Organized by



# ADVANTAGES : MEPF INSTALLATION

MEPFS embeddings can be easily installed during fabrication.

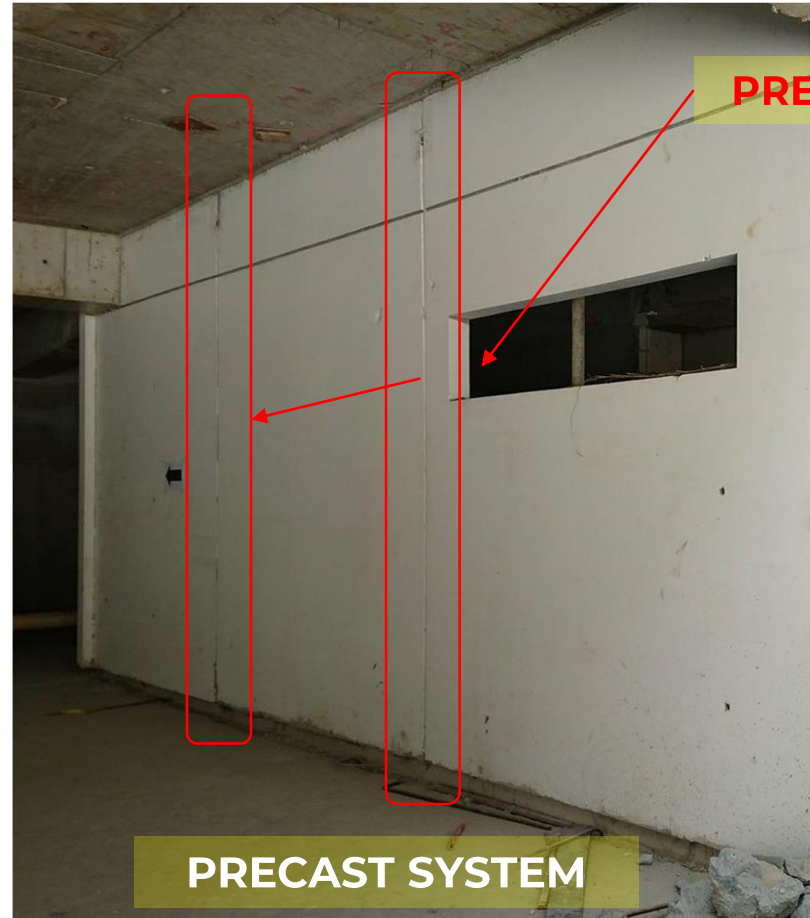




# ADVANTAGES : **WATERTIGHTNESS**

Due to its durability, precast have decades of service and provide unmatched impact resistance and security. Because precast has the ability to hold or convey fluids, it is more durable and provides unmatched impact resistance and security.

Precast have its specified gap to be treated by sealant (approved by consultant), which can resist water leak or any unnecessary fluid.



**SEALANT  
APPLICATION**



# ADVANTAGES

- Precast concrete production can be performed on ground level, which helps with safety throughout a project.
- Greater control over material quality and workmanship
- The forms used in a precast plant can be reused hundreds to thousands of times before they have to be replaced, often making it cheaper.
- Precast is more durable than concrete hollow blocks (CHB). Usually, building an exterior facade requires from 650 psi (non-load-bearing) to 1,500 psi (load-bearing) of CHB. But precast panels have concrete designs ranging from 3,000 psi above.





**Asia-Pacific  
Housing Forum  
Manila**

Organized by



# **WHY CHOOSE DATEM AS YOUR PROVIDER OF PRECAST PANEL SYSTEM?**



# DEDICATION

to Nation-Building







Asia-Pacific  
Housing Forum  
Manila

Organized by



# ACCOUNTABILITY

Seamless Process Flow



# TEAMWORK

Collaborating, Co-creation and Cooperation



# EXCELLENCE

Total Value-Engineered construction



QUADRUPLE  
A



# MALASAKIT

A Deep Sense of stewardship





Asia-Pacific  
Housing Forum  
Manila

Organized by



Thank you for trusting  
**DATEM**